

# Tech Sheet: Boeing KC-135, C-135, RC-135, EC-135

(boeing-KC135.pdf)



Boeing KC-135 Intake Covers, soft type, CFM56 engines

## Section 2: Engine Covers

**Off-Link Engine Covers** protect commercial aircraft engines while in storage. They protect the engine from the elements, prevent surface contamination from oil leaks, and help stop "parts robbing". There are three types: Complete, partial and component covers.

**Complete covers** enclose the entire engine. There are openings for mount points and engine access. Closures are heavy duty zippers, secured or tightened with straps and industrial buckles. High visibility reflective strips are sewn around the perimeter to enhance safety, and to prevent collisions from moving vehicles. Directional indicators, company insignia, and a forms pouch are sewn onto each cover. Where needed strap loops are placed at hoist points for easy and fast installation. Locking mechanisms can be installed on the cover to help prevent unauthorized access.

**Partial covers** are designed as "Rain Caps", which cover the top and sides but do not prevent oil contamination from the engine to the surface below. Their construction details are similar to the complete cover designs, but they can be easier to install.

**Component Covers**, such as intake or exhaust covers, are designed according to customers' specifications. A wide variety of materials and attachment details are available, as well as custom imprinting.

**FABRIC & THREAD:** For strength, durability and ease of use we make these covers of the heaviest nylon ballistic cloth. It is sewn in multiple courses with *Tenara* thread, and reinforced with heavy vinyl cloth at high-wear points.

**Tri-Fold Ring Engine Covers** are designed to install easily yet be completely storable. A spring steel hoop is sewn into the hem of

each cover, allowing them to be installed without climbing onto the wing or using a stepladder in many cases. To store the covers the spring steel hoop folds like a band-saw blade into three nesting rings. Each cover folds into a compact circular bundle which is stored in the included duffel bag, yet they unfold quickly for use. The Tri-Fold Ring cover is made of medium weight Solution-Dyed Polyester which is available in a variety of colors to match the paint trim. Each cover set comes complete with installation and folding instructions. The aircraft's registration number can be silkscreened onto the cover for an extra charge.

**ALL-YEAR USE MATERIAL** - Made with Solution dyed Polyester fabric, the all-year use material is the best option for sun protection and cover longevity. This heavier more durable material is intended for all weather conditions, such as rain and snow or lots of sun.

The **Boeing KC-135, C-135, RC-135, EC-135 Intake Covers** are designed to install easily yet be completely storable. A spring steel hoop is sewn into the hem of each cover, allowing them to be installed without climbing onto the wing or using a stepladder. To store the covers the spring steel hoop folds like a band-saw blade into three nesting rings. Each cover folds into a compact circular bundle which is stored in the included duffel bag, yet they unfold quickly for use. The Tri-Fold Ring cover is made of medium weight nylon which is available in a variety of colors to match the paint trim. Each cover set comes complete with installation and folding instructions. The aircraft's registration number can be silkscreened onto the cover for an extra charge.



KC-135 "Tambourine" style, Double Fold Intake Covers with artwork    KC135 Intake Covers, Soft Type, R-Model, CFM56 Engines

Description	Part Number	Price
INTAKE COVERS, soft type, R-model, CFM56 engines (set of 4)	<b>KC135-100</b>	<b>Contact Us</b>
INTAKE COVER, soft type, R-model, CFM56 engine (EACH)	<b>KC135-103</b>	<b>Contact Us</b>
INTAKE COVERS, "tambourine" type, DOUBLE FOLD, R-model, CFM56 engines (set of 4)	<b>KC135-160</b>	<b>Contact Us</b>
STORAGE BAG, HEAVY DUTY for tambourine type engine covers (set of 4)	<b>KC135-161</b>	<b>Contact Us</b>
STORAGE BAG, HEAVY DUTY for TF-33 Intake Covers (set of 4)	<b>KC135-163</b>	<b>Contact Us</b>
STORAGE BAG, Light Weight Type for tambourine type engine covers (set of 4)	<b>KC135-164</b>	<b>Contact Us</b>
INTAKE COVERS, soft type, TF-33 engines (set of 4)	<b>KC135-170</b>	<b>Contact Us</b>
EXHAUST COVER SET, TF-33 engines (set of 4)	<b>KC135-175</b>	<b>Contact Us</b>
INTAKE/EXHAUST COVER SET, soft type, TF-33 engines (set of 8)	<b>KC135-185</b>	<b>Contact Us</b>
QEC OFF-LINK SHIPPING/TRANSPORT ENGINE COVER, CFM-56-2B, fully enclosed	<b>KC135-717</b>	<b>Contact Us</b>

### Section 3: Plugs & Protection

**Boeing KC-135, C-135, RC-135, EC-135 Heat Resistant Pitot Tube Covers** are made of Naugahyde vinyl, and lined with a non-burning material. They are designed to cover the entire pitot assembly, slipping over the tube and tightening around the base with a Velcro strap detail. A "Remove Before Flight" streamer is attached to the cover. **Heat Resistant Pitot Covers** are an upgrade to our standard design, and help prevent the pitot cover from melting onto the tube if the pitot heat is accidentally turned on while installed.

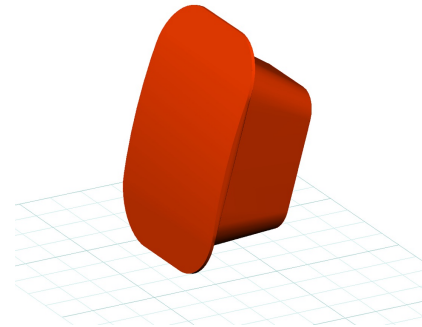
If you want the set tethered together, please let us know.

The **Engine Exhaust Plugs** are custom fit for your Boeing KC-135, C-135, RC-135, EC-135 exhaust openings, made with heavy-duty vinyl material, and stuffed with a single block of sculpted urethane foam. Each plug has a zipper that allows the foam to be removed and dried if necessary. Exhaust plugs have 'remove before flight' streamers sewn onto the face of the plugs. Most plugs are imprinted with the aircraft registration number in black for an extra charge. Exhaust plugs may be inserted soon after flight when the engine is still warm. Engine Inlet Plugs are commonly referred to as Cowl Plugs, Intake Plugs, Cowl Blocks, Engine Blocks, and Engine Bungs.

The **Engine Inlet Plugs** are custom fit for your Boeing KC-135, C-135, RC-135, EC-135 intakes, made with heavy-duty vinyl material, and stuffed with a single block of sculpted urethane foam. Each plug has a zipper that allows the foam to be removed and dried if necessary. Engine plugs have 'remove before flight' streamers sewn onto the face of the plugs. Most plugs are imprinted with the aircraft registration number in black for an extra charge. Storage bag NOT included. Engine plugs may be inserted after flight when the engine is still warm. Engine Inlet Plugs are commonly referred to as Cowl Plugs, Intake Plugs, Cowl Blocks, Engine Blocks, and Engine Bungs.



KC-135 ACM Inlet Plug



KC-135/RC-135 Forward Cheek Fairing Plug (3D Model)

Description	Part Number	Price
INTAKE PLUGS, TF-33 engines (set of 4)	<b>KC135-180</b>	<b>Contact Us</b>
INTAKE PLUGS, CFM56 engines (set of 4)	<b>KC135-182</b>	<b>Contact Us</b>
BYPASS VENT, EXHAUST PLUGS AND NOZZLE CAP COVERS, 4 engines, R-model, CFM56 engines (set of 20)	<b>KC135-206</b>	<b>Contact Us</b>
BYPASS VENT & TURBINE EXHAUST PLUGS, TF-33 engines (set of 12)	<b>KC135-207</b>	<b>Contact Us</b>
PRE-COOLER EXHAUST PLUG, loc. above turbine exhaust outlet	<b>KC135-210</b>	<b>Contact Us</b>
ANTI-ICE EXHAUST PLUGS (set of 4)	<b>KC135-212</b>	<b>Contact Us</b>
BLEED AIR EXHAUST PLUGS, loc. inboard side on rt. engines and outboard side on lft. engines (set of 4)	<b>KC135-215</b>	<b>Contact Us</b>
FWD CHEEK FAIRING BCS PLUG (RC135-250)	<b>KC135-250</b>	<b>Contact Us</b>
FWD CHEEK FAIRING LCS SCOOP PLUG (RC135-251), Left & Right Side (set of 2)	<b>KC135-251</b>	<b>Contact Us</b>

ACM INLET PLUG (Pilot left side), w/ grommetted RBF Streamer, Equiv. or Better to p/n 66F40158-1, 67D34391-3, or NSN 1730-00-027-6466	KC135-260	Contact Us
ACM INLET PLUG (Co Pilot right side), w/ grommetted RBF Streamer	KC135-265	Contact Us
ACM EXHAUST PLUG (Pilot left side), w/ grommetted RBF Streamer	KC135-270	Contact Us
ACM EXHAUST PLUG (Co Pilot right side), w/ grommetted RBF Streamer	KC135-275	Contact Us
APU EXHAUST PLUG, R-model	KC135-280	Contact Us
PITOT COVERS, heat resistant type (set of 2)	KC135-350	Contact Us
TAT COVERS, heat resistant type (set of 2)	KC135-355	Contact Us

## Section 5: HeatShields & Sun Reflectors

**Cockpit Heatshields** are interior sunshades for the aircraft's cockpit. The product is a unique composite of closed-cell foam with a silver mylar finish. The semi-rigid design is stiff enough to stand inside the window framing. The set folds up flat and is easily stored in the included storage sleeve. Some designs may require velcro and suction cups. Our Heatshields for jets are offered white side out because some aircraft manufacturers have issued advisories against reflective window inserts due to potential heat damage. A Heatshield is an excellent short-term remedy for cockpit overheating, but an external fabric cover is more effective for long-term protection.



KC-135 Cockpit HeatShields

Description	Part Number	Price
COCKPIT HEATSHIELDS (set of 10)	KC135-900	Contact Us

## Section 6: Miscellaneous Products

**Tire or Wheelpant Covers** are designed to protect the wheelpant, or the tires and wheels, from sun damage and damage from the tow bar when moving the airplane.

**ALL-YEAR USE MATERIAL** - Made with Silver Acrylic Sunbrella canvas, the all-year use material is the best option for sun protection and cover longevity. This heavier more durable material is intended for all weather conditions, such as rain and snow or lots of sun.



Boeing KC-135 Main Gear Tire Covers

Description	Part Number	Price
NOSE GEAR TIRE COVERS, 39261D0311001-1 NLG Single Wheel Cover (set of 2)	KC135-200	Contact Us
MAIN GEAR TIRE COVERS, separate for each tire, 39261D0311003-1 C/KC-135 MLG Single Wheel Cover (set of 8)	KC135-201	Contact Us
MAIN GEAR TIRE COVERS, single cover per tire set, 39261D0311005-1 C/KC-135 MLG One Piece Cover (set of 2)	KC135-202	Contact Us
MAIN GEAR TIRE COVERS, single cover per tire set, w/ preheater access flap (set of 2)	KC135-204	Contact Us

**Prices subject to change. Other Covers and Design Alterations: Prices on request. Prices are FOB Morgan Hill, CA. Sales tax on orders shipped to California addresses. Orders take approximately 3 weeks to complete. For domestic orders we normally ship by UPS ground service. Next day shipping and air parcel post is available on request. We can take payment by Visa, Mastercard, American Express, or Discover.**

**Bruce's Custom Covers offers protective covers and plugs for virtually every type of airplane, jet and helicopter. If you have questions about our products please call any time TOLL FREE: 800/777-6405, or FAX: 408/738-2729.**



A division of Aircraft Covers, Inc.

18850 Adams Ct.  
Morgan Hill, CA 95037  
www.AircraftCovers.com

## Aircraft Cover Ordering Form

Customer Info	Name _____
	Shipping Address _____ _____
	Phone & Email _____
Payment	Credit Card Number <input type="text"/> <input type="text"/> <input type="text"/> <input type="text"/> <input type="text"/> <input type="text"/> <input type="text"/> <input type="text"/> <input type="text"/> <input type="text"/> <input type="text"/> <input type="text"/> <input type="text"/> <input type="text"/> <input type="text"/> <input type="text"/> <input type="text"/>
	Exp. Date <input type="text"/> <input type="text"/> / <input type="text"/> <input type="text"/> V-Code* <input type="text"/> <input type="text"/> <input type="text"/> <input type="text"/>
	<small>*Visa, Mastercard, Discover: last 3 numbers on back of card, right of signature. Amex: 4 smaller numbers printed on face of card.</small>
A/C Info	Reg / Tail Number: _____ Aircraft Type: _____ Year: _____
	Colors / Paint Scheme (be specific): _____

### Please specify below the items you would like to order.

See technical sheet or visit our website for part numbers (or just fill in the description)

	Part Number	Quant	Description	Price
1				
2				
3				
4				
5				
6				
7				
8				
9				
10				

TOTAL	
-------	--

<b>Optional Items (check the box of the item you want)</b>	
<input type="checkbox"/>	Imprint aircraft registration number onto both sides of canopy cover.....\$35.00
<input type="checkbox"/>	Imprint aircraft registration number onto jet intake covers.....\$55.00

Ph: 408/738-3959 • Toll Free: 800/777-6405 • Fax: 408/738-2729 • bruce@aircraftcovers.com